

TECHNICAL INSIGHT

A PUBLICATION OF NSK EUROPE

Counterfeiting... Don't fake it

Over the past 10 years, counterfeit bearing products and custom seizures have grown exponentially around the globe. It's no longer limited to large production of smaller bearings but larger bore bearings as well. Between 2009 and 2011, authorities customs seized more than 2.2 million counterfeit bearing products, of various sizes, en route to 50 different countries, including Europe.

NSK has teamed up with the World Bearing Association (WBA) along with other bearing manufacturers to combat counterfeiting. WBA, a non-profit and unincorporated industrial association, has created an Anti-Counterfeiting Committee.

This committee is dedicated to addressing the counterfeiting of premium brand bearings and to assist enforcement agents in the eradication of counterfeits.

For more information on the WBA click:

www.stopfakebearings.com

What to look for in a counterfeit bearing

There are several areas that can be inspected in order to determine genuine versus counterfeit bearings. These include bearing packaging, labelling and the bearings appearance itself. Inspecting all of these areas and knowing what to look for can alert customers of a counterfeit versus genuine product.

If you have concerns about a NSK bearing in your possession being counterfeit, please contact us.

One fake bearing could break your business

Purchasing and installing counterfeit bearings creates a significant safety risk. Counterfeit bearings installed in any product can bring catastrophic failure. Counterfeit bearings can endanger lives and cause damage to industry. Counterfeiters trade on the excellent reputation of the bearing manufacturers, but, sell at a lower price by producing lower quality goods at lower production costs. Lower cost means quality of the raw material, particularly bearing steel, is compromised. Manufacturing accuracy is disregarded and application requirements are ignored.



Watch the video to learn more:

www.stopfakebearings.com/#/video

Always use trusted sources

Counterfeiting is the single most important issue facing the global bearing industry. Over the past few months, NSK has experienced several cases of counterfeit bearing product being sold in various regions. Applications which include railroad traction motors, mining equipment and various production facilities have all been subjected to counterfeiting. If counterfeit bearings are installed in an application, serious problems can occur. Due to inferior quality, counterfeit bearings are more likely to encounter bearing seizure which leads to application shut-down, loss of production, severe accidents and in worse case death. It is for this reason that NSK takes counterfeiting very seriously.

Bearing products must always be purchased from an authorised NSK channel. To assure you are receiving legitimate NSK product, please purchase through the appropriate channels.

You can locate an Authorised Distributor through the NSK Europe website. www.nskeurope.com



How to identify authentic NSK bearings

What to look for:

- › Was it purchased through an authorised channel?
- › Is the product wrapped in appropriate shipping material?
- › Are markings similar to standard manufacturer markings?
- › Are there markings on different areas of the bearing than normal?
- › Are there any markings at all?
- › Inspect the rolling elements and raceways. Look for rough finishes and abnormal roller appearance.



Both images are counterfeit. Incorrect wrapping and no markings on bearings.

A. Authentic NSK Product

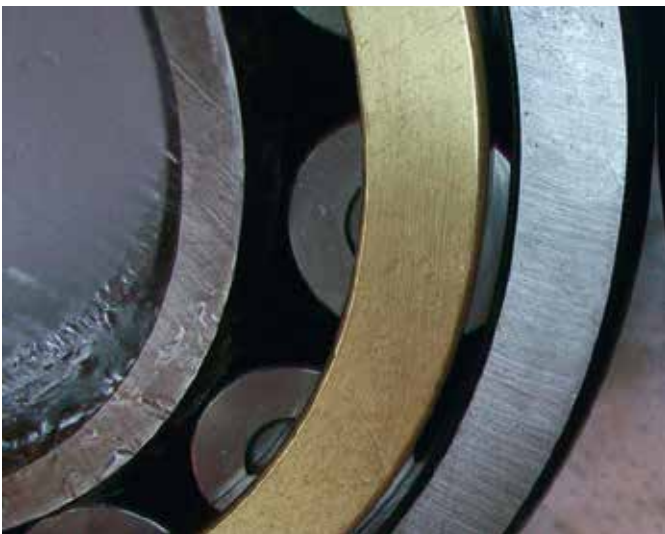


B. Counterfeit Bearing



Although they look similar in general appearance, you can see several areas in which they are different including dimples on the roller ends.

A. Authentic NSK Product



B. Counterfeit Bearing



NSK single piece machine brass cage with broached pocket. Counterfeit bearing shows: rivet designed cage.



Is the above a counterfeit bearing? Yes – because original bearings would have more oil holes, chamfer should not be polished and there must be dimples at the roller ends.

Examine the Bearings Packaging

- › Is the packaging similar to other packaging?
- › Are the crates quality shipping crates?
- › Do they have proper markings?
- › Are the logo markings genuine?

Examine the Outer Shipping Boxes

- › Look at the pallet configuration and container load
- › Compare manufacturer country with shipment country

If you have any concerns about an NSK product that you have purchased, please contact your local Distributor or NSK Europe directly at: info-uk@nsk.com. Your inquiry will be directed to the relevant sales person for your area.



Correct NSK Logo on wooden boxes