

Outer Ring Guided Brass Cage Angular Contact Ball Bearing

This angular contact ball bearing has been specifically designed to match the tough operating conditions found in oil-free screw compressors. Thanks to its high strength outer ring guided brass cage and improved accuracy, it can reach extremely high speed ensuring therefore a long running life & helping to minimise downtime and maintenance costs.

Product Features

- Special internal design (different contact angles available)
- Increased limiting speed
- High strength outer ring guided brass cage
- High dimensional and running accuracy (P5)
- Narrow axial clearances or preloads

Benefits

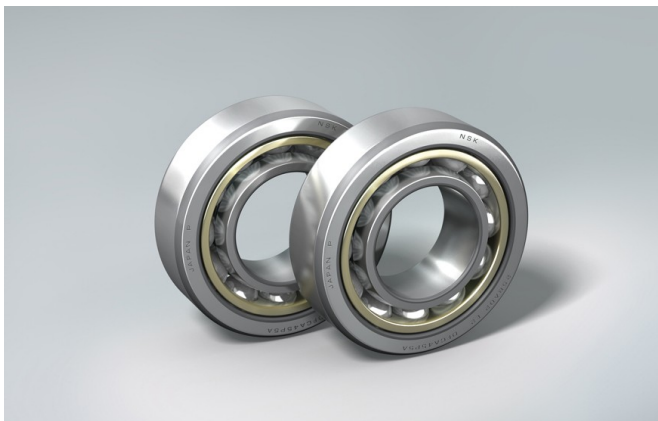
- Long life
- High speed capabilities
- Reduced heat generation, vibration and noise

Condition Description

- High Accuracy
- High Load
- High Speed
- High Temperature

Industries

- Chemical and Pharmaceutical
- Industrial Pumps and Compressors
- Petrochemical



BA	20	02	A	DF	CA25	P5
----	----	----	---	----	------	----

Description

BA	Bearing Type Symbol (BA: 30° ; BN: 20° ; BT: 40° contact angle)
20	Nominal Bore Diameter
02	Dimension symbol
A	Internal Design (with outer ring guided brass cage)
DF	Arrangement Symbol (Face to Face)
CA25	Axial Clearance in µm
P5	Accuracy