

## Pulley Bearings

Pulley bearings correspond in design to a sealed Double-row Angular Contact Bearing. Based on their function as Pulley Bearings, the outer ring is reinforced. The contact seals provide an excellent protection against the ingress of dirt and reduce the danger of lubricant failure.

### Product Features

- Shields ZR: sheet steel discs
- Seals RSR: made of nitrile rubber reinforced with an embedded steel disc
- Re-greasable through the inner ring
- Outer ring can be cylindrical or crowned

### Benefits

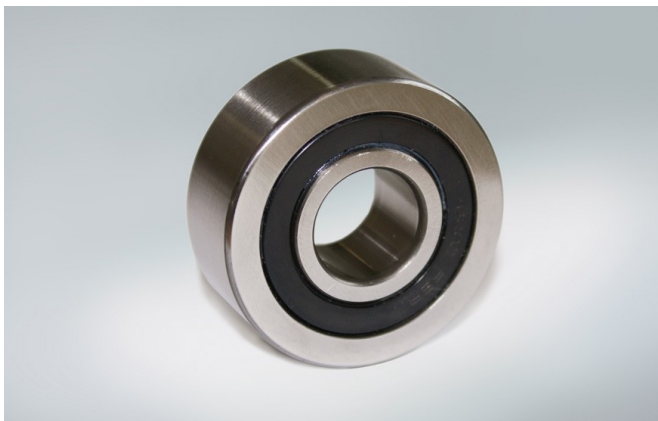
- Contact seals provide excellent protection against the ingress of dirt, reduce wear on the raceways and ball surface, reduce noise, vibration and the danger of lubricant failure
- Accomodate radial and axial forces in both directions
- Transfer of tilting moment possible
- Other bearing variants available on request
- Outer and inner ring: diameter, width, threads etc
- Contour options: crowned, gothic etc.
- Special seals

### Condition Description

- Contamination
- Lubrication

### Industries

- Food and Beverage
- Agriculture
- Automotive



62	05	ZZ	C3	E
----	----	----	----	---

#### Description

62	Basic Type & Series
05	Bore Diameter
ZZ	Features
C3	Internal Clearance
E	Noise Level