

## Double Row Angular Contact Ball Bearing - High Capacity

NSK's high capacity double row angular contact ball bearings have been designed especially for pumps. Thanks to their new 30° contact angle, they can accommodate higher axial loads helping generate longer life, minimise downtime and reduce maintenance costs.

### Product Features

- High axial load capacity (30° contact angle)
- Steel cage
- High dimensional and running accuracy (P6)
- Heat treatment to run up to 150°C
- Open or shielded design

### Benefits

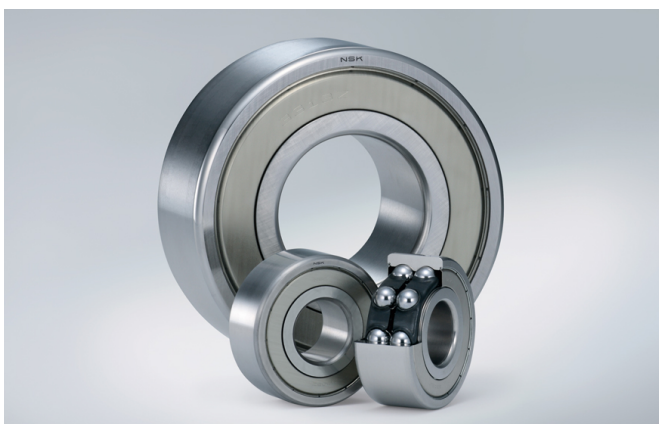
- Long life
- Improved axial load capacity
- Possibilities for downsizing

### Condition Description

- High Load
- High Speed
- High Temperature

### Industries

- Fans and Blowers
- Paper
- Petrochemical
- Quarrying, Mining and Construction
- Utilities



3308 F W1 ZZ CG 5 P6 \*\* X26

#### Description

3308	Basic Bearing Number
F	30° contact angle
W1	Steel cage
ZZ	Two Shields
CG 5	Radial Internal Clearance
P6	Accuracy
**	
X26	Heat stabilization